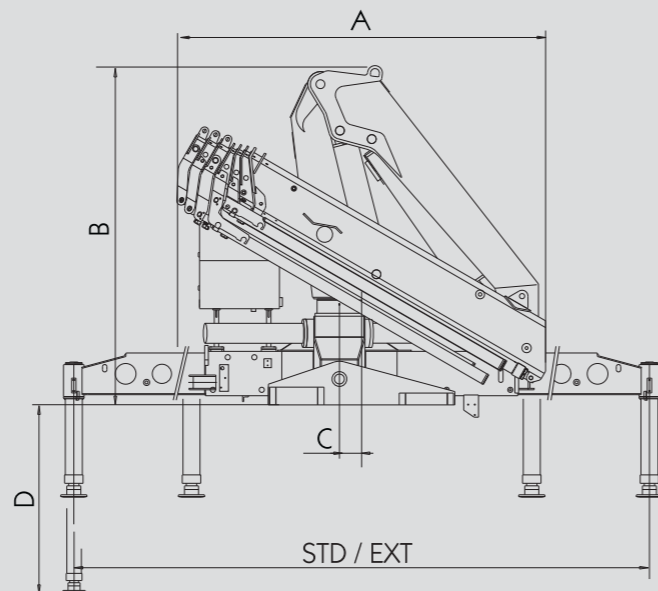
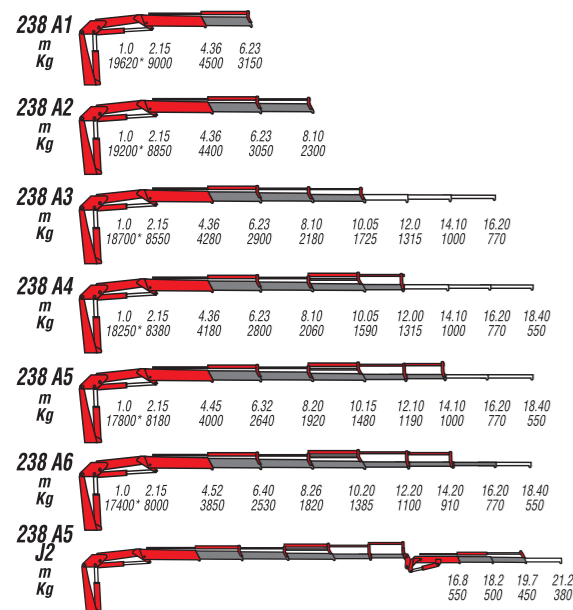


# 238

MODELLI MODELS	MOMENTO LIFTING MOMENT	SBRACCIO ORIZ. HORIZ. HYDRAULIC OUTREACH	PORTATA AL DISTRIBUTORE OIL FLOW TO THE CONTROL VALVE	SBRACCIO MAX. VERTICALE MAX VERTICAL REACH	PESO WEIGHT	PRESSIONE PRESSURE	INTERASSE STABILIZZATORI STANDARD APERTI DISTANCE BETWEEN CENTRES WITH OPENED OUTRIGGERS	INTERASSE STAB. EXTRA APERTI EXTRA WIDE DISTANCE BETWEEN CENTRES WITH OPENED OUTRIGGERS
	Tm.	m.	l/min	m.	Kg	bar	mm.	mm.
238 A1	19.6	6.23	40	9.9	2280	300	5500	6240
238 A2	-	8.10	40	11.8	2430	300	5500	6240
238 A3	-	10.05	40	13.8	2570	300	5500	6240
238 A4	-	12.00	40	15.7	2700	300	5500	6240
238 A5	-	14.10	40	17.8	2800	300	5500	6240
238 A6	-	16.20	40	19.8	2900	300	5500	6240
238 A5J2	-	19.70	40	23.3	3135	300	5500	6240

Autocarro consigliato - Recommended truck - Camion conseillé - Camion aconsejado  
M.T.T. ton 19 - G.V.W. ton 19

### STANDARD



238	A	B	C	STD	EXT	D
238 A1	2480	2295	150	6240	5500	1244
238 A2	2480	2295	150	6240	5500	1244
238 A3	2480	2295	150	6240	5500	1244
238 A4	2480	2295	150	6240	5500	1244
238 A5	2480	2295	150	6240	5500	1244
238 A6	2495	2295	150	6240	5500	1244
238 A5J2	2480	2300	150	6240	5500	1244

### SPAZIO RICHIESTO PER L'INSTALLAZIONE NECESSARY SPACE FOR INSTALLATION

238	Con attivazioni-With extra function	
238 A1	970	1120
238 A2	970	1120
238 A3	1000	1120
238 A4	1000	1120
238 A5	1000	1120
238 A6	1000	1120
238 A5J2	1100	



F.lli FERRARI CORPORATION S.p.A.

Via Pasubio, 3

42022 Boretto (RE) Italy

Tel. 0522/486311

Fax 0522/486330

E-mail: marketing@flliferrari.it

www.flliferrari.com

COMPANY  
WITH QUALITY MANAGEMENT  
SYSTEM CERTIFIED BY DNV  
= ISO 9001/2000 =

M.K.T.5800230 04/08 1000



  
238

# 238



F.LLI FERRARI CORPORATION S.p.A.



# FERRARI® 238



I

La gru F.Ili Ferrari mod. 238 racchiude in sé caratteristiche tecniche e meccaniche di elevata qualità

- Acciai ad alto limite di snervamento
- Struttura interamente sabbiata
- Bracci esagonali
- Bracci fino a 16,2 m (18,4 con prolunga meccanica)
- Valvole di sicurezza flangiate
- Limitatore di momento
- Stabilizzatori fissi
- Stabilizzatori estendibili idraulicamente
- Stabilizzatori extra estendibili
- Boccole autolubrificanti
- Raccordi SAE JIC 1514I
- Gancio girevole
- Kit di montaggio compreso

**Accessori**

- Prolonghe meccaniche\*
- Distributore proporzionale compensato
- Comandi supplementari attivati
- Traverse supplementari
- Dispositivo di controllo RLC
- Verricello idraulico
- Utilizzo con attrezzo
- Posto di manovra in alto
- Piattello stabilizzatore snodato
- Radiocomando

\*) No A1 - A2



GB

The crane model 238 from F.Ili Ferrari has been projected and manufactured with high quality technical and mechanical characteristics

- Steel with high yield strength
- Structure fully sandblasted
- Hexagonal booms
- Hydraulic outreach until 16,2 mt (18,4 with mechanical boom)
- Flanged valves
- Load limiting device
- Fixed outriggers
- Hydraulic opening cylinders
- Extra wide outriggers
- Self-lubricating bushings
- SAE JIC 1514I fittings
- Turning hook
- Mounting kit included

**Accessories**

- Mechanical booms\*
- Proportional control valve
- Extra functions
- Extra beams
- Load radio checking device RLC
- Hydraulic winch
- Use with special equipment
- Top seat
- Articulated outrigger plate
- Remote control



F

La grue modèle 238 F.Ili Ferrari est conçue avec des caractéristiques techniques et mécaniques de la plus haute qualité

- Acier à résistance élevée
- Structure complètement sablée
- Extensions hexagonales
- Portée hydraulique jusqu'à 16,2 mt (18,4 mt avec rallonges mécaniques)
- Soupapes de sûreté bridées
- Limiteur de moment
- Béquilles fixes
- Béquilles à ouverture hydraulique
- Béquilles extra larges
- Douilles autolubrifiantes
- Raccords SAE-JIC 1514I
- Crochet tournant
- Kit de montage inclus

**Accessoires**

- Rallonges mécaniques\*
- Distributeur proportionnel
- Circuits supplémentaires activés
- Béquilles supplémentaires
- Dispositif de contrôle de la charge RLC
- Treuil hydraulique
- Utilisation avec accessoire
- Siège en haut
- Plat d'appui béquille avec joint à rotule
- Commande à distance



D

Das Kranmodell 238 vom F.Ili Ferrari ist mit höchsten Qualität für technischen und mechanischen Eigenschaften projiziert und hergestellt worden

- Stahl mit hoher Fließgrenze
- Sandstrahlen der Struktur
- Sechswinklige Ausschübe
- Hydraulische Reichweite bis 16,2 mt. (18,4 mt mit mechanischen Verlängerungen)
- Geflanschte Sicherheitventile
- Überlastabschalter
- Feste Abstützungen
- Abstützungen mit hydraulischen Öffnung
- Extra-breite Abstützungen
- Selbstschmierende Buchsen
- SAE JIC 1514I Anschlüsse
- Schwenkbarer Haken
- Einsatzbau eingeschlossen

**Zubehöre**

- Mechanische Verlängerungen\*
- Proportionale Steuerventil
- Zusatzfunktionen
- Zusatzabstützungen
- Vorrichtung für Lastkontrolle RLC
- Hydraulische Seilwinde
- Benutzung mit Zubehöre
- Hochsitz
- Gelenkstutzscheibe
- Funksteuerung



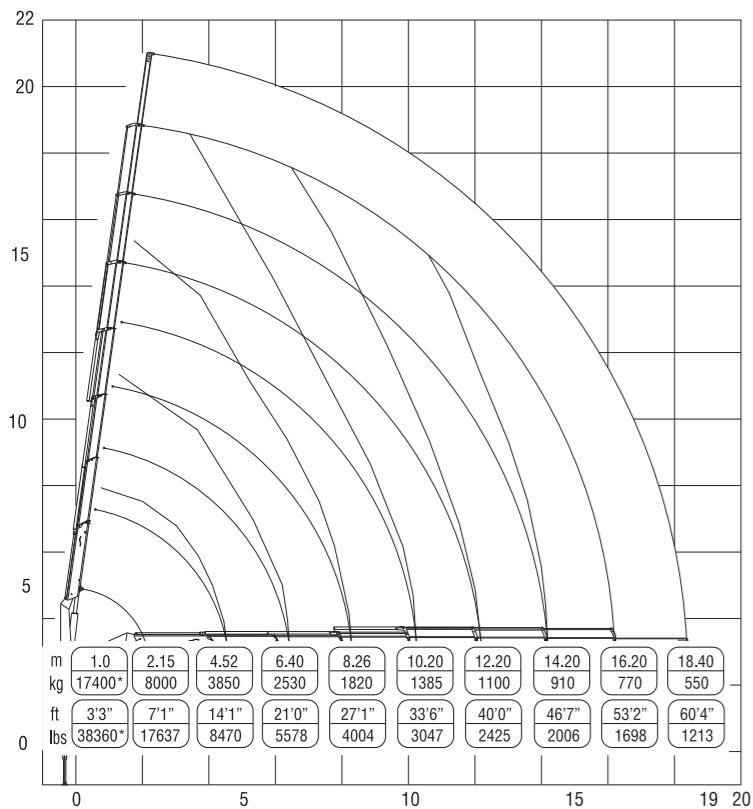
SP

El modelo de la grúa 238 de F.Ili Ferrari se ha proyectado y fabricado con características técnicas y mecánicas de alta calidad

- Acero en alto borde de rendimiento
- Estructura completamente arenada
- Prolongas hexagonales
- Alcances hidráulicos hasta mt. 16,2 (18,4 mt con prolongas mecánicas)
- Valvulas de seguridad ensanchadas
- Limitador de carga
- Estabilizadores fijos
- Estabilizadores con abertura hidráulica
- Patas extra-largas
- Casquillos autolubricantes
- Empalmes SAE-JIC 1514I
- Gancho giratorio
- Kit de montaje incluido

**Acesorios**

- Prolongas mecánicas\*
- Distribuidor proporcional
- Activaciones adicionales
- Patas adicionales
- Dispositivo de verificación de la carga RLC
- Cabrestante hidráulico
- Utilización con accesorio
- Puesto de manobra arriba
- Plato de apoyo de patas articulado
- Mando a distancia



(\*) Portata teorica Theoretical lifting capacity



**RADIO REMOTE CONTROL**



Questo dispositivo visualizza su un display collocato in prossimità dei comandi il carico applicato al gancio della gru, rendendo l'utilizzo delle prolunghe meccaniche sicuro secondo la normativa europea EN 12999.

This device shows the load at the hook on a display placed near the controls, making safe the use of the mechanical booms following the European rule EN 12999.

The operator can control the crane with high precision proportional levers in every position and, doing so, can supervise the loading and unloading operations. That means a great time saving and a higher safety.

All the remote control used by F.Ili FERRARI CORPORATION have an identification code and are shielded from electromagnetic fields and from external radio signals.

